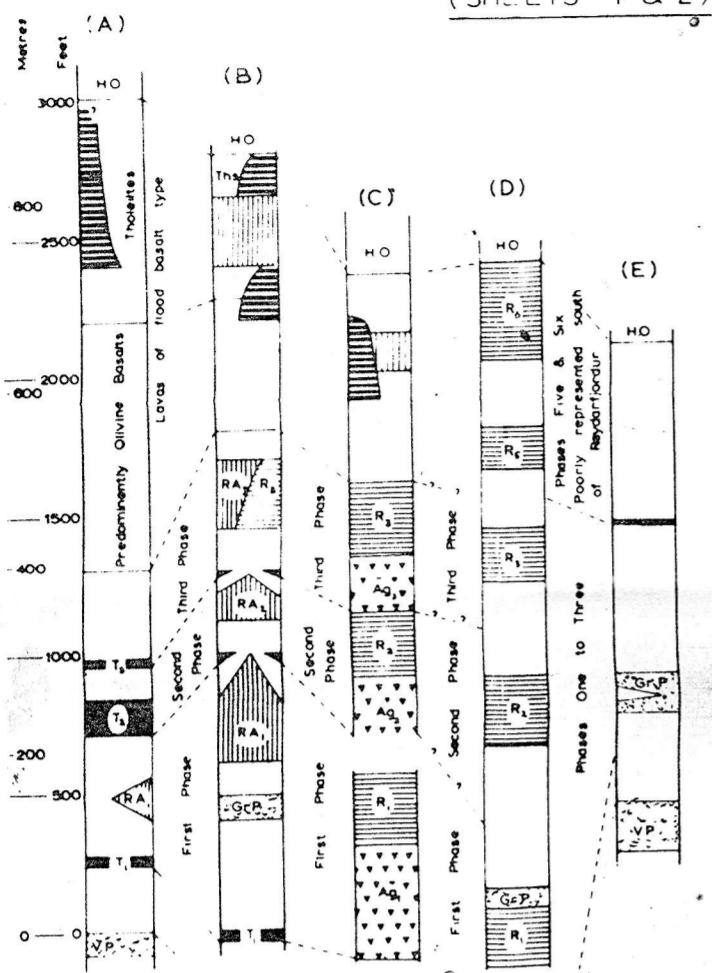


REYDARFJORDUR ACID VOLCANIC CENTRE sheet 1

DIAGRAMMATIC STRATIGRAPHIC SECTIONS REYDARFJORDUR ACID VOLCANIC CENTRE

(SHEETS 1 & 2)



LOCATION OF SECTIONS

- (A) Hafnarnes Peninsula
- (B) Gilsardalur, Kerlingarfjall, Vattarnes Peninsula
- (C) Eyri, Brimnes, Seldalur area
- (D) Helgustadafjall, Reydarfjordur north side
- (E) Bagall, Nordfjordur

Topography based on 1:100,000 map of Iceland, sheet 114, modified from aerial photographs
Geological mapping by I.L. Gibson, 1962

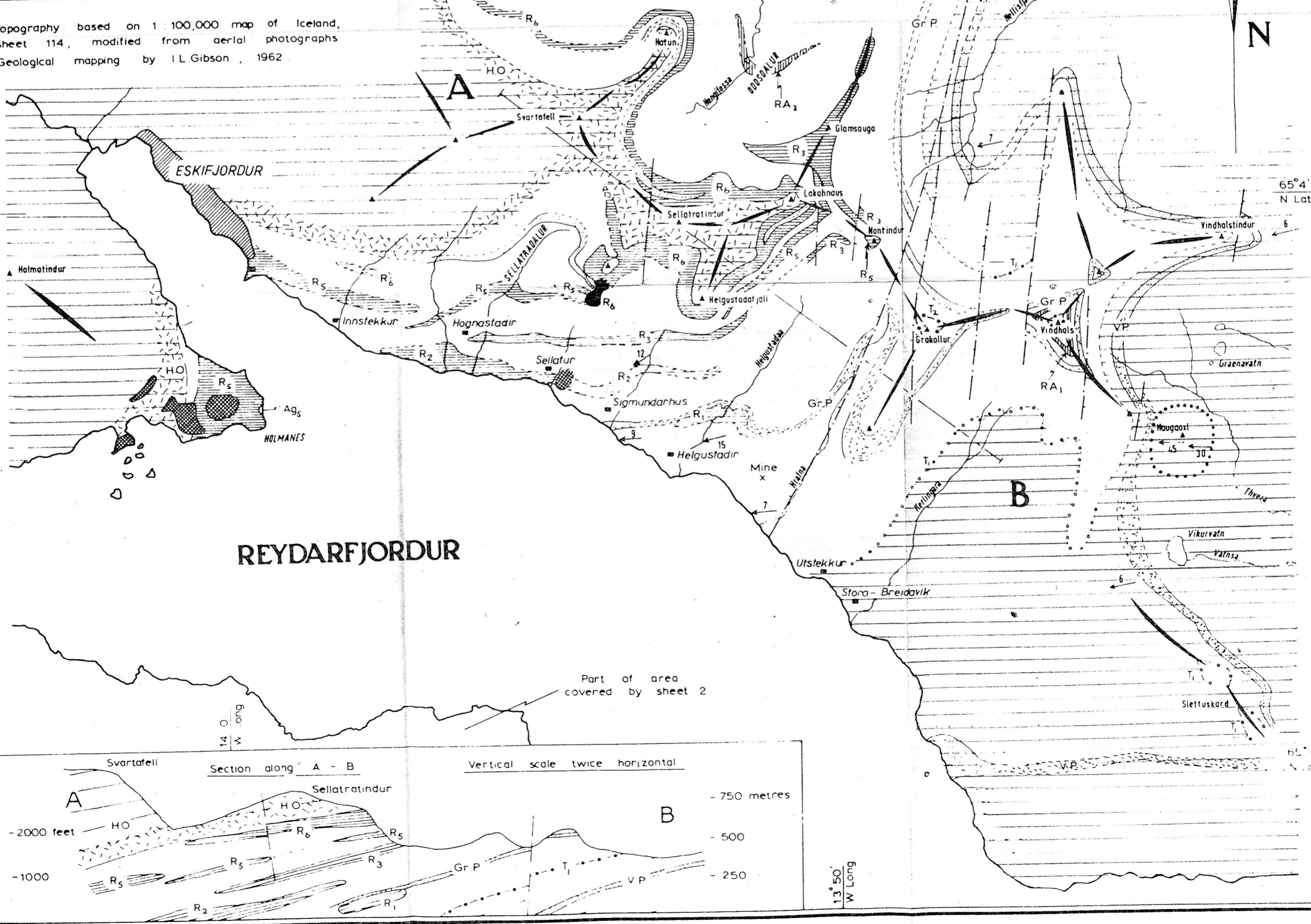
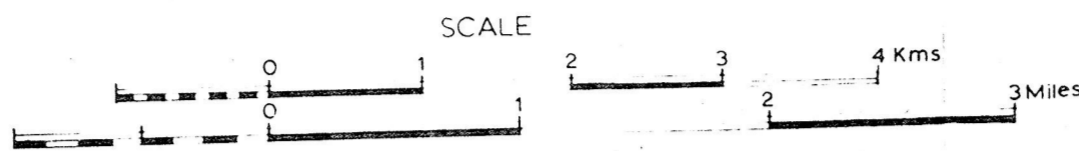
REYDARFJORDUR ACID VOLCANIC CENTRE

- Undifferentiated Tholeiite and Basaltic Andesite lavas
- Rhyolitic Andesite lavas (RA)
- Rhyolite lavas (R)
- Rhyolite Vent - intrusions
- Dolerite intrusions
- Bedded Acid tuff (exposed inferred)
- Haugaxli Uplift

LAVAS OF FLOOD BASALT TYPE

- Olivine - Basalt } where distinguished
- Porphyritic Basalt } where distinguished
- Undifferentiated
- Dip in degrees
- Farmhouse
- Summit

- Holmar Olivine - Basalt Group H.O
- Grakollur Porphyritic Basalt Group Gr.P
- Vindhals Porphyritic Basalt Group V.P
- Some data for VP from G.P.L Walker



REYDARFJORDUR

Part of area covered by sheet 2

